



Bathing establishment Fact Sheet

Name of bathing establishment	BAGNO ORSA MAGGIORE
Address	Byle Amerigo Vespucci 4
City	Marina di Carrara (Ms)
Contacts	0585 630014 - 0585 633422 - lorsamaggioresrl@virgilio.it
Website	missing

TESTED BY: [Handy Superabile - Social Promotion Association](#) in summer 2024

Please note The following information refers to the date of verification shown at the bottom of each sheet. **The Association** is not responsible for any significant changes made by the property after the visit.



Summary

Bathing establishment Fact Sheet	1
Arrival at the property.....	3
Private/public parking.....	3
Pathway from the car park to the main entrance	3
Reception.....	5
Bar/restaurant	5
Internal Pathways and common services.....	6
Internal Pathways	6
Toilet and shower for guests with reduced mobility	7
Changing room	8
Beach.....	9
Children's play area	10
Swimming pool	11
Medical practices/healthcare facilities.....	12



Arrival at the property

Private/public parking


Presence of private parking	YES
Type of private parking fund	Gravel, with concrete walkway
Presence of parking space reserved for people with disabilities in the private parking lot	YES
Public parking nearby	YES
Type of public parking floor	asphalt
Presence of parking space reserved for people with disabilities in the public parking lot	YES



Pathway from the car park to the main entrance

Pathway from the car park to the entrance	by 3 ramps: the first length 42 cm, width 124 cm, slope 4.2%; second length 300 cm, width 127 cm, slope 3%; the second length 98 cm, width 94 cm, slope 8.6%
---	--



There are indicators and tactile maps	NO
Useful width of door/entrance gate	Above 90 cm
 A photograph showing the entrance of a building with a light-colored facade. A concrete ramp leads to a doorway. A motorcycle is parked on the ramp, and another is parked on the sidewalk to the right. A person is visible near the entrance.	 A photograph of a narrow concrete path running alongside a light-colored building wall. The path is bordered by a low curb and a strip of gravel. In the background, there are trees and a sign that says 'MOTO'.
 A photograph of a bicycle parking area. Numerous bicycles are parked in rows on a paved surface. The area is bordered by a green hedge and trees.	 A photograph of a narrow path made of light-colored stones or gravel, cutting through a grassy area. The path is flanked by trees and a green hedge. A sign on a tree reads 'NO BICICLETTE NEL PRATO'.



Reception

Umbrella booking system	<input type="checkbox"/> By the web <input checked="" type="checkbox"/> By phone <input checked="" type="checkbox"/> On-site
Presence of multilingual staff	YES
Presence of plant map with legend of services available	NO
Presence of visuo-tactile map	NO
Bulletin board/information panels with an average height of 130 cm in a well-lit area and a font size of at least 14 dpi with a contrast ratio greater than 4.5:1	YES
The staff followed a training course on welcoming people with different disabilities	NO

Bar/restaurant

Type of venue	Snack bar
Access to the premises	flat
Useful width of door/entrance gate	Above 90 cm
Bar bench	Above 100 cm
Types of tables	with central support
Space under floor tables	Above 65 cm
Multilingual menu	NO
Large print menus	YES
Braille menu	NO
Table service for people with disabilities	YES
Availability of gluten-free food	<input type="checkbox"/> bread <input checked="" type="checkbox"/> pasta <input type="checkbox"/> biscuits <input checked="" type="checkbox"/> ice cream <input checked="" type="checkbox"/> Pre-packaged foods

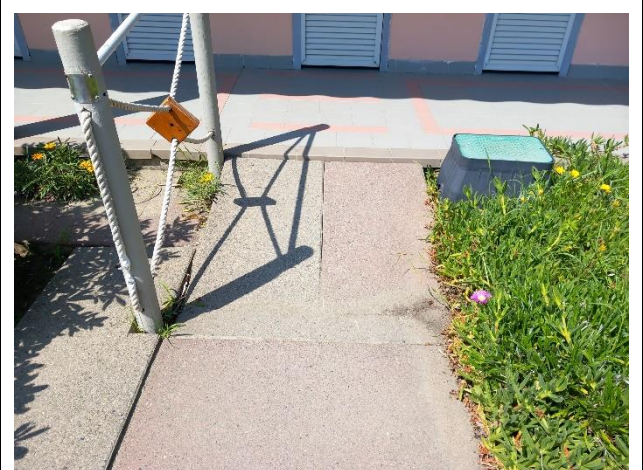


Internal Pathways and common services

Internal Pathways



Indicate whether the pathways connecting the entrance to the beach are flat or with ramps in addition to those already described

Obstacle-free courses

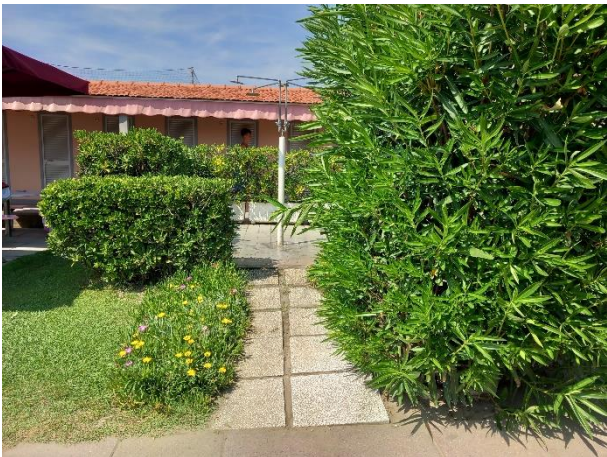





Toilet and shower for guests with reduced mobility

Number of accessible toilets for guests with reduced mobility	1
Access to the premises	with a 1 cm high step
Usable width of the entrance door	87 cm
Toilet height	45 cm
Open front toilet seat	YES
Support handles	on both sides
Flexible shower on the side of the toilet	NO
Free space on the sides of the toilet	left 25 cm right Above 90 cm frontal Above 90 cm
Electric doorbell/telephone	YES
Washbasin with space underneath for wheelchair	68 cm
Height from the ground lower edge mirror	129 cm
Baby changing table	NO
	
Accessible shower available for guests with reduced mobility	YES separate from the toilet room



Access to the shower room if separated from the toilet room	by ramp length 250 cm, width 100 cm slope 4.4 %
Useful width of the door/entrance gate if separated from the toilet room	Above 90 cm
Type of shower	open type
Floor-level shower	YES
Shower chair	missing
Support handle	missing
Presence of shower head or sliding rails	Fixed shower head
Electric doorbell/telephone	NO
	

Changing room

Changing room accessible to guests with reduced mobility available	YES
Access to the premises	flat
Useful width of door/entrance gate	85 cm
Locker room size	width 139 cm and depth 198 cm
Presence of cot	NO
Coat rack height from the ground	156 cm




Beach

Type of beach	sand
Beach access	flat
Walkway to reach the umbrellas	YES
Type of walkway	PVC
Width of the walkway	90 cm





Removable Platform between the walkway and the umbrella station to facilitate the passage and parking wheelchair	YES
Amphibious beach chair available for helping people with reduced mobility to enjoy swimming (owned by the establishment or by association)	YES
	

Children's play area

Children's play area	inaccessible to children with reduced mobility due to sandy bottom
There are games for children with reduced mobility	NO



Swimming pool

The property has a swimming pool	NO
----------------------------------	----



Medical practices/healthcare facilities

Hospitals near the property	N.O.A. Nuovo Ospedale Apuane Marina di Massa By Enrico Mattei, 21 telephone 0585 4931
Other healthcare facilities	Emergency Medical Service By Giovan Pietro, 1 54033 CARRARA (MS) TELEPHONE; 0585 885452 District Presidium of Carrara Center - USL Tuscany northwest Piazza Sacco e Vanzetti, 5 - 54033 Carrara (MS) UO Nephrology ASL 1 Massa Carrara telephone 0585/498225 dialysis service ON HOLIDAYReferent: Erika Biassoli Tel. 0585/498225

TESTED BY: **Handy Superabile Social Promotion Association** in summer 2024